



**PRVA**<sup>®</sup>  
audio  
B R A Z I L

2018  
**PRO AUDIO**  
CATALOG



## About Us

Founded in 2006 by a Brazilian group of executives and engineers, PRV Audio started with a compact line of transducers fully dedicated to the Brazilian market. PRV Audio was established to design, create, and introduce new pro audio products, combining passion for crafting loudspeakers, technical knowledge, and design skill with the understanding of how, when, and where to market products. PRV Audio Brazil has quickly grown to become one of the most innovative manufacturers of professional loudspeakers. In 2009, PRV Audio opened its own subsidiary in Fort Lauderdale, Florida, USA, to better serve the growing international demand, PRV AUDIO is currently present in more than 64 countries worldwide.

In early 2018, Executive Director Daniel Costa became the majority shareholder of PRV Audio Group, transferring the company headquarters from Sao Leopoldo, Rio Grande do Sul, BR to Fort Lauderdale, Florida, USA.

Today, the Fort Lauderdale location serves as PRV Audio Headquarters, managing R&D departments in Brazil and production facilities in different parts of the world. This energetic and passionate team is dedicated to the worldwide sales, distribution, and marketing of PRV AUDIO products for every lifestyle.



## The Research & Development Team

Based out of Brazil, PRV AUDIO's R&D team is headed by Senior Chief Engineer Acir Ozelame, and is responsible for the development of new technologies and continuous innovation of the PRV Audio Line of products, which is constantly improved based on customer feedback.

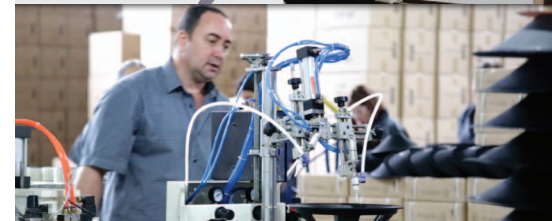
The R&D Team is also responsible for closely overseeing PRV Audio's manufacturing facilities, guaranteeing the uncompromising quality products you've come to trust over the years.

The fast growth and expansion to international markets brought the need to develop a wide variety of products for different applications, while remaining competitive in a globalized market.

PRV Audio's manufacturing had to become more dynamic to accommodate the globalized demand, expanding in a slow and meticulously planned process to take place at top-level factories located in Brazil, China and Italy, enabling PRV Audio to deliver only the best to the market.

## Design

PRV Audio's engineers bring years of experience and know-how in many different areas of the Brazilian and International Audio Industry, and this knowledge translates to unique products. Using design tools such as Solid Edge, a 3D CAD for technical drawing, and FEMM (Finite Element Method Magnetics) to simulate the magnetic field in the loudspeaker motor, PRV Audio has pushed the limits of these tools to achieve maximum efficiency and to develop cutting-edge loudspeakers that exceed customer expectations.



## Testing and Listening

Every new product is subject to meticulous testing. Unlike other companies that use measurement systems that focus their data acquisition on a single technique, PRV Audio uses CLIO 12, a multi-measure, fully integrated hardware/software platform, resulting in a significant advantage over the competition. This allows PRV Audio to provide reliable, functional, and long-lasting products that only reach the market after they have been extensively tested in the lab and on the field, guaranteeing that the PRV Audio customer will have access only to the best quality products.

# FORTE





SERIES

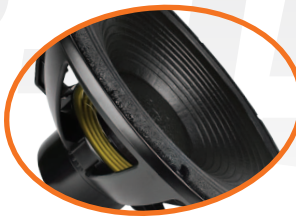


## MORE POWER HANDLING AND LESS DISTORTION

PRV Audio's Forte Series was specially tailored to give you more power handling and less distortion. The larger voice coil ensures high heat dissipation and the necessary BL to deliver high sensitivity even on high power with the minimum distortion. The lower Qts allows more precise mid bass.

Superior fidelity is achieved through a perfect combination of a non-pressed cone with a smooth frequency response and a surround ring specially designed to allow high displacement without increasing the distortion.

MODEL		Size	Ohms	Voice Coil	RMS W	Program W	Sens	Freq Resp
12MB1003FT		12"	8 Ω	3"	500	1000	98 dB	55 - 5,000 Hz
10MB800FT		10"	8 Ω	2.5"	400	800	99 dB	65 - 6,500 Hz
8MB600FT		8"	8 Ω	2"	300	600	96 dB	105 - 6,500 Hz
6MB500FT		6"	8 Ω	2"	250	500	94 dB	110 - 6,500 Hz



### 21SW4000-NDY-2

The combination of special treated carbon fiber loaded cone assembly, large triple roll surround and a double silicon spider gives the 21SW4000-NDY-2 remarkable strength and excursion control under its large 15 mm Xmax, 72 mm peak-to-peak excursion before damage



NEW



#### 21SW4000-NDY-2

SUBWOOFER

SW

#### 21SW3000-NDY-4

SUBWOOFER

SW

#### 18SW3600

SUBWOOFER

SW

#### 18SW2200v2

SUBWOOFER

SW

APPLICATION	SUBWOOFER	SUBWOOFER	SUBWOOFER	SUBWOOFER
RATED POWER HANDLING	2000 Watts	1500 Watts	1800 Watts	1100 Watts
PROGRAM POWER	4000 Watts	3000 Watts	3600 Watts	2200 Watts
SENSITIVITY (1W/1M)	97 dB	98 dB	97 dB	97 dB
FREQUENCY RANGE AT -10 dB	35 - 1,200 Hz	35 - 1,800 Hz	35 - 1,300 Hz	45 - 2,500 Hz
RESONANCE FREQUENCY (F5)	32.2 Hz	32.35 Hz	35.40 Hz	42.70 Hz
REC. CROSSOVER POINT AT 12 dB/OCT	45 Hz	45 Hz	45 Hz	50 Hz
XMAX EXCURSION (MATHEMATICAL)*	15.00 mm	13.25 mm	13.25 mm	9.75 mm
VOICE COIL DIAMETER	5.3"	4.5"	4.5"	4"
NOMINAL IMPEDANCE	2 Ω	4 Ω	8 Ω	8 Ω
MAGNET MATERIAL	Neodymium	Neodymium	Ferrite	Ferrite
FRAME MATERIAL	Die Cast Aluminum	Die Cast Aluminum	Die Cast Aluminum	Die Cast Aluminum
WEIGHT	30.20 Lbs	24.00 Lbs	33.40 Lbs	32.80 Lbs
MOUNTING DEPTH	9.64" (245 mm)	9.21" (234 mm)	7.64" (194 mm)	7.48" (190 mm)
REPLACEMENT CONE KIT	RK21SW4000-NDY-2	RK21SW3000-NDY-4	RK18SW3600	RK18SW2200v2



### 18SW3600

This subwoofer features a high power handling, 4.5" inner and outer wound voice coil, fiberglass fiber former, powerful optimized ferrite motor, ribbed paper cone and waterproof cone treatment. A double silicon spider system ensures excellent control during large excursions of 54 mm peak-to-peak excursion before damage



#### 15W1600

WOOFER

W

#### 15W1000v2

WOOFER

W

#### 15W700

WOOFER

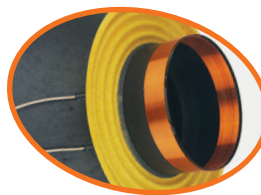
W

APPLICATION	WOOFER	WOOFER	WOOFER
RATED POWER HANDLING	800 Watts	500 Watts	350 Watts
PROGRAM POWER	1600 Watts	1000 Watts	700 Watts
SENSITIVITY (1W/1M)	97 dB	97 dB	95 dB
FREQUENCY RANGE AT -10 dB	55 - 2,500 Hz	40 - 4,000 Hz	35 - 3,500 Hz
RESONANCE FREQUENCY (F5)	53.60 Hz	39.56 Hz	31.69 Hz
REC. CROSSOVER POINT AT 12 dB/OCT	75 Hz	80 Hz	80 Hz
XMAX EXCURSION (MATHEMATICAL)*	7.00 mm	6.37 mm	6.87 mm
VOICE COIL DIAMETER	4"	3"	3"
NOMINAL IMPEDANCE	8 Ω	8 Ω	8 Ω
MAGNET MATERIAL	Ferrite	Ferrite	Ferrite
FRAME MATERIAL	Die Cast Aluminum	Stamped Steel	Stamped Steel
WEIGHT	24.71 Lbs	12.00 Lbs	11.17 Lbs
MOUNTING DEPTH	5.51" (140 mm)	5.82" (148 mm)	5.51" (140 mm)
REPLACEMENT CONE KIT	RK15W1600	RK15W1000v2	N/A

\*Xmax Mathematical Formula: (Voice Coil Depth - Gap Depth) / 2 + Gap Depth / 4

### 12MR2000-NDY

Features a large 4" CCAW inside/out voice coil that results in very high efficiency while providing smooth and accurate mid range response



# 12"



	12MR2000-NDY <span>MR</span>	12MR2000 <span>MR</span>	12W1600 <span>W</span>
APPLICATION	MID RANGE	MID RANGE	WOOFER
RATED POWER HANDLING	1000 Watts	1000 Watts	800 Watts
PROGRAM POWER	2000 Watts	2000 Watts	1600 Watts
SENSITIVITY (1W/1M)	98 dB	97 dB	94 dB
FREQUENCY RANGE AT -10 dB	55 - 5,500 Hz	60 - 5,000 Hz	55 - 2,500 Hz
RESONANCE FREQUENCY (F <sub>S</sub> )	54.48 Hz	57.23 Hz	51.22 Hz
REC. CROSSOVER POINT AT 12 dB/OCT	180 Hz	180 Hz	60 Hz
XMAX EXCURSION (MATHEMATICAL)*	6.15 mm	6.62 mm	10.50 mm
VOICE COIL DIAMETER	4"	4"	4"
NOMINAL IMPEDANCE	8 Ω	8 Ω	8 Ω
MAGNET MATERIAL	Neodymium	Ferrite	Ferrite
FRAME MATERIAL	Die Cast Aluminum	Die Cast Aluminum	Die Cast Aluminum
WEIGHT	13.93 Lbs	23.04 Lbs	24.22 Lbs
MOUNTING DEPTH	5.51" (140 mm)	5.47" (139 mm)	5.51" (140 mm)
REPLACEMENT CONE KIT	RK12MR2000-NDY	RK12MR2000	RK12W1600



### 12MB1500

A double silicon spider system ensures excellent control during large excursions of 40 mm peak-to-peak excursion before damage



	12MB1500 <span>MB</span>	12MB1003FT <span>MB</span>	12W750A <span>W</span>
APPLICATION	MID BASS	MID BASS	WOOFER
RATED POWER HANDLING	750 Watts	500 Watts	375 Watts
PROGRAM POWER	1500 Watts	1000 Watts	750 Watts
SENSITIVITY (1W/1M)	98.5 dB	98 dB	97 dB
FREQUENCY RANGE AT -10 dB	75 - 5,000 Hz	55 - 5,000 Hz	60 - 5,500 Hz
RESONANCE FREQUENCY (F <sub>S</sub> )	66.07 Hz	51.43 Hz	59.87 Hz
REC. CROSSOVER POINT AT 12 dB/OCT	110 Hz	120 Hz	200 Hz
XMAX EXCURSION (MATHEMATICAL)*	6.50 mm	6.12 mm	3.62 mm
VOICE COIL DIAMETER	3.5"	3"	2.5"
NOMINAL IMPEDANCE	8 Ω	8 Ω	8 Ω
MAGNET MATERIAL	Ferrite	Ferrite	Ferrite
FRAME MATERIAL	Die Cast Aluminum	Die Cast Aluminum	Stamped Steel
WEIGHT	16.70 Lbs	15.70 Lbs	10.85 Lbs
MOUNTING DEPTH	5.14" (130.5 mm)	5.31" (135 mm)	5.12" (130 mm)
REPLACEMENT CONE KIT	RK12MB1500	RK12MB1003FT	RK12W750A



### 10MR1000X

The 10MR1000X offers outstanding durability, high power handling at sensitivity rating of 100 dB 1W/1M which makes it capable of generating a lot of output

# 10"



	<b>10MR1000X</b> <span>MR</span>	<b>10MR1003-NDY</b> <span>MR</span>	<b>10MB1000</b> <span>MB</span>	<b>10MB800FT</b> <span>MB</span>
APPLICATION	MID RANGE	MID RANGE	MID BASS	MID BASS
RATED POWER HANDLING	500 Watts	500 Watts	500 Watts	400 Watts
PROGRAM POWER	1000 Watts	1000 Watts	1000 Watts	800 Watts
SENSITIVITY (1W/1M)	100 dB	99 dB	95 dB	99 dB
FREQUENCY RANGE AT -10 dB	75 - 6,000 Hz	65 - 6,500 Hz	65 - 5,500 Hz	65 - 6,500 Hz
RESONANCE FREQUENCY (FS)	72.0 Hz	55.16 Hz	64.46 Hz	64.72 Hz
REC. CROSSOVER POINT AT 12 dB/OCT	150 Hz	160 Hz	80 Hz	120 Hz
XMAX EXCURSION (MATHEMATICAL)*	2.50 mm	5.50 mm	4.87 mm	3.50 mm
VOICE COIL DIAMETER	3"	3"	3"	2.5"
NOMINAL IMPEDANCE	8 Ω	8 Ω	8 Ω	8 Ω
MAGNET MATERIAL	Ferrite	Neodymium	Ferrite	Ferrite
FRAME MATERIAL	Die Cast Aluminum	Die Cast Aluminum	Stamped Steel	Die Cast Aluminum
WEIGHT	15.43 Lbs	9.23 Lbs	11.69 Lbs	11.01 Lbs
MOUNTING DEPTH	4.27" (108.5 mm)	4.92" (125 mm)	3.97" (101 mm)	4.09" (104 mm)
REPLACEMENT CONE KIT	RK10MR1000X	RK10MR1003-NDY	RK10MB1000	RK10MB800FT



### 10MB800FT

Optimized for use in compact enclosures, this mid bass speaker provides smooth vocal response with great output



	<b>10W650A</b> <span>W</span>	<b>10W450</b> <span>W</span>	<b>10MB400</b> <span>MB</span>	<b>10FR300PR</b> <span>FR</span>
APPLICATION	WOOFER	WOOFER	MID BASS	FULL RANGE
RATED POWER HANDLING	325 Watts	225 Watts	200 Watts	150 Watts
PROGRAM POWER	650 Watts	450 Watts	400 Watts	300 Watts
SENSITIVITY (1W/1M)	97 dB	93 dB	97 dB	100 dB
FREQUENCY RANGE AT -10 dB	75 - 5,500 Hz	75 - 6,500 Hz	65 - 4,000 Hz	60 - 14,000 Hz
RESONANCE FREQUENCY (FS)	72.31 Hz	63.05 Hz	62.78 Hz	60.12 Hz
REC. CROSSOVER POINT AT 12 dB/OCT	150 Hz	120 Hz	95 Hz	75 Hz
XMAX EXCURSION (MATHEMATICAL)*	4.50 mm	3.87 mm	5.30 mm	4.00 mm
VOICE COIL DIAMETER	2.5"	2"	2"	2"
NOMINAL IMPEDANCE	8 Ω	8 Ω	8 Ω	8 Ω
MAGNET MATERIAL	Ferrite	Ferrite	Ferrite	Ferrite
FRAME MATERIAL	Stamped Steel	Stamped Steel	Stamped Steel	Stamped Steel
WEIGHT	10.49 Lbs	5.80 Lbs	8.60 Lbs	7.21 Lbs
MOUNTING DEPTH	4.33" (110 mm)	4.13" (105 mm)	4.12" (105 mm)	4.17" (106 mm)
REPLACEMENT CONE KIT	RK10W650A	N/A	RK10MB400	N/A
	Also Available in 4 and 16 Ohms	Also Available in 4 Ohms	Also Available in 4 Ohms	

\*Xmax Mathematical Formula: (Voice Coil Depth - Gap Depth) / 2 + Gap Depth / 4

# 8"

# 8"



### 8MR600X

A Qts of 0.37 and an unique double roll diaphragm suspension design allows for a flat response from 200Hz to 2500Hz, even at high excursion

NEW



	<b>8MB600FT</b> <i>MID BASS</i> <b>MB</b>	<b>8MR600X</b> <i>MID RANGE</i> <b>MR</b>	<b>8MR500-NDY-4</b> <i>MID RANGE</i> <b>MR</b>	<b>8MB500v2-NDY</b> <i>MID BASS</i> <b>MB</b>
APPLICATION	<i>MID BASS</i>	<i>MID RANGE</i>	<i>MID RANGE</i>	<i>MID BASS</i>
RATED POWER HANDLING	300 Watts	300 Watts	250 Watts	250 Watts
PROGRAM POWER	600 Watts	600 Watts	500 Watts	500 Watts
SENSITIVITY (1W/1M)	96 dB	98 dB	96 dB	95 dB
FREQUENCY RANGE AT -10 dB	105 - 6,500 Hz	85 - 8,500 Hz	95 - 9,000 Hz	75 - 7,500 Hz
RESONANCE FREQUENCY (FS)	98.4 Hz	76.9 Hz	95.12 Hz	71.42 Hz
REC. CROSSOVER POINT AT 12 dB/OCT	100 Hz	160 Hz	160 Hz	120 Hz
XMAX EXCURSION (MATHEMATICAL)*	5.30 mm	5.25 mm	3.00 mm	4.75 mm
VOICE COIL DIAMETER	2"	2"	1.5"	2"
NOMINAL IMPEDANCE	8 Ω	8 Ω	4 Ω	8 Ω
MAGNET MATERIAL	Ferrite	Ferrite	Neodymium	Neodymium
FRAME MATERIAL	Die Cast Aluminum	Die Cast Aluminum	Stamped Steel	Stamped Steel
WEIGHT	9.13 Lbs	7.04 Lbs	2.35 Lbs	2.36 Lbs
MOUNTING DEPTH	3.42" (82.5 mm)	3.68" (95.5 mm)	3.15" (80 mm)	3.31" (84 mm)
REPLACEMENT CONE KIT	RK8MB600FT	RK8MR600X	RK8MR500-NDY-4	RK8MB500v2-NDY

### 8MB500v2-NDY

Improved voice coils and Neodymium motor designs take this Mid Bass driver to the next level on its high output punch, a smooth midrange, and response up to 7,500 Hz. Push terminals for easy installation



	<b>8MB450</b> <i>MID BASS</i> <b>MB</b>	<b>8MR400-NDY</b> <i>MID RANGE</i> <b>MR</b>	<b>8MR400A</b> <i>MID RANGE</i> <b>MR</b>
APPLICATION	<i>MID BASS</i>	<i>MID RANGE</i>	<i>MID RANGE</i>
RATED POWER HANDLING	225 Watts	200 Watts	200 Watts
PROGRAM POWER	450 Watts	400 Watts	400 Watts
SENSITIVITY (1W/1M)	93 dB	94 dB	94 dB
FREQUENCY RANGE AT -10 dB	70 - 7,000 Hz	115 - 8,500 Hz	80 - 8,500 Hz
RESONANCE FREQUENCY (FS)	70.84 Hz	111.30 Hz	79.14 Hz
REC. CROSSOVER POINT AT 12 dB/OCT	120 Hz	160 Hz	260 Hz
XMAX EXCURSION (MATHEMATICAL)*	4.87 mm	4.75 mm	3.00 mm
VOICE COIL DIAMETER	2"	1.5"	1.5"
NOMINAL IMPEDANCE	8 Ω	8 Ω	8 Ω
MAGNET MATERIAL	Ferrite	Neodymium	Ferrite
FRAME MATERIAL	Stamped Steel	Stamped Steel	Stamped Steel
WEIGHT	3.71 Lbs	1.31 Lbs	4.41 Lbs
MOUNTING DEPTH	3.37" (85 mm)	2.95" (75 mm)	3.52" (89.5 mm)
REPLACEMENT CONE KIT	N/A	N/A	N/A
	Also Available in 4 Ohms	Also Available in 4 Ohms	

8" LOUDSPEAKERS

8" LOUDSPEAKERS

7

**6MR500-NDY**

The high end neodymium magnet assembly was chosen to increase sensitivity and power handling, giving this woofer the highest sensitivity of 96dB



	<b>6MR500-NDY</b>	<b>6MB500FT</b>	<b>6MR300SEAL v2</b>	<b>6MB250-NDY</b>	<b>6MR250A</b>
APPLICATION	MID RANGE MR	MID BASS MB	MID RANGE MR	MID BASS MB	MID RANGE MR
RATED POWER HANDLING	250 Watts	250 Watts	150 Watts	125 Watts	125 Watts
PROGRAM POWER	500 Watts	500 Watts	300 Watts	250 Watts	250 Watts
SENSITIVITY (1W/1M)	96 dB	94 dB	96 dB	94 dB	94 dB
FREQUENCY RANGE AT -10 dB	105 - 12,500 Hz	110 - 6,500 Hz	400 - 7,500 Hz	115 - 6,500 Hz	150 - 9,500 Hz
RESONANCE FREQUENCY (FS)	104.60 Hz	106.78 Hz	390.6 Hz	113.60 Hz	145.30 Hz
REC. CROSSOVER POINT AT 12 dB/OCT	230 Hz	120 Hz	400 Hz	125 Hz	300 Hz
XMAX EXCURSION (MATHEMATICAL)*	4.22 mm	5.52 mm	4.50 mm	4.25 mm	3.00 mm
VOICE COIL DIAMETER	2"	2"	1.5"	1.5"	1.5"
NOMINAL IMPEDANCE	8 Ω	8 Ω	8 Ω	8 Ω	8 Ω
MAGNET MATERIAL	Neodymium	Ferrite	Ferrite	Neodymium	Ferrite
FRAME MATERIAL	Die Cast Aluminum	Die Cast Aluminum	Stamped Steel	Stamped Steel	Stamped Steel
WEIGHT	3.34 Lbs	7.19 Lbs	4.73 Lbs	1.22 Lbs	3.79 Lbs
MOUNTING DEPTH	2.91" (74 mm)	3.11" (79 mm)	2.99" (76 mm)	2.50" (65 mm)	3.11" (79 mm)
REPLACEMENT CONE KIT	RK6MR500-NDY	RK6MB500FT	N/A	N/A	N/A
	Also Available in 4 Ohms			Also Available in 4 Ohms	

**6MB200 v2**

The magnet and motor assembly are attached to a sturdy reinforced steel frame, ensuring a solid support structure and long lasting play in mostly any environment



	<b>6MR200A</b>	<b>6MB200 v2</b>	<b>6MB200</b>	<b>5MR450-NDY</b>	<b>4MR60-4</b>
APPLICATION	MID RANGE MR	MID BASS MB	MID BASS MB	MID RANGE MR	MID RANGE MR
RATED POWER HANDLING	100 Watts	100 Watts	100 Watts	225 Watts	30 Watts
PROGRAM POWER	200 Watts	200 Watts	200 Watts	450 Watts	60 Watts
SENSITIVITY (1W/1M)	94 dB	93.5 dB	93 dB	94 dB	90 dB
FREQUENCY RANGE AT -10 dB	155 - 11,000 Hz	125 - 6,500 Hz	125 - 4,500 Hz	160 - 16,000 Hz	90 - 15,000 Hz
RESONANCE FREQUENCY (FS)	152.6 Hz	123.28 Hz	123.30 Hz	159 Hz	89.88 Hz
REC. CROSSOVER POINT AT 12 dB/OCT	150 Hz	125 Hz	125 Hz	290 Hz	190 Hz
XMAX EXCURSION (MATHEMATICAL)*	2.62 mm	4.80 mm	4.87 mm	3.45 mm	2.87 mm
VOICE COIL DIAMETER	1.5"	1.5"	1.5"	1.5"	0.78"
NOMINAL IMPEDANCE	8 Ω	8 Ω	8 Ω	8 Ω	4 Ω
MAGNET MATERIAL	Ferrite	Ferrite	Ferrite	Neodymium	Ferrite
FRAME MATERIAL	Stamped Steel	Stamped Steel	Stamped Steel	Die Cast Aluminum	Stamped Steel
WEIGHT	3.52 Lbs	3.30 Lbs	3.34 Lbs	2.65 Lbs	1.15 Lbs
MOUNTING DEPTH	2.24" (57 mm)	2.60" (66 mm)	2.60" (66 mm)	2.60" (66 mm)	2.20" (56 mm)
REPLACEMENT CONE KIT	N/A	N/A	N/A	RK5MR450-NDY	N/A
		Also Available in 4 Ohms	Also Available in 4 Ohms	Also Available in 4 Ohms	

\*Xmax Mathematical Formula: (Voice Coil Depth - Gap Depth) / 2 + Gap Depth / 4





PRV Audio crossovers are designed and constructed with special attention to both component quality and mechanical rigidity. Not only do our crossovers sound good, they can withstand the use and abuse associated with transportation and of live performances. Our crossovers offer some unique selectable features:

### WOOFER IMPEDANCE SELECTION

This setting allows the same crossover to be used with 8 or 4 Ohms speakers and combinations of them (series or parallel connection) providing you with one solution for multiple cabinet variations.

### WOOFER ROLL-OFF CROSSOVER ADJUSTMENT

Some woofers respond excessively at the cut off frequency than others and need 12 dB/octave filters, where other woofers have a natural roll-off at or near the crossover point, and work well with 6 dB/octave filters. We give you the ability to select this on one of our crossovers: the 2DF1800 two-way crossover .

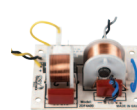
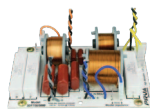
### SPEAKER ATTENUATION

Match the output level of the different speakers in your cabinet with this setting; it helps in creating a seamless transition from high to mid to low—especially useful for when driver sensitivities do not match.

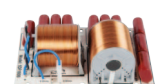
### BRIGHTNESS ADJUSTMENT

Many large format compression drivers naturally roll-off above 10 kHz. Our brightness adjustment offsets this phenomenon, applying attenuation below 6 kHz and increasing the energy at high frequencies for more brightness and definition.

All crossovers are factory-set with these adjustments in their conventional position, for quick installation and use, but with a little testing and experimentation, we believe that the final sound of your speaker will sound that much better!



MODEL NUMBER	3DF750/5000	3DF400/1800	2DF4400	2DF2K	2DF1800
TYPE	THREE-WAY	THREE-WAY	TWO-WAY	TWO-WAY	TWO-WAY
Crossover Point	750/5,000	400/1,800	4,400	2,000	1,800
Selectable Crossover Point (hz)	-	-	-	-	-
Impedance (Ohms)	8	8	8	8	8
Woofer Impedance (Ohms)	4/8	4/8	4/8	-	4/8
RMS Power (Watts)	450	950	290	450	650
Program Power (Watts)	900	1,900	580	900	1,300
HF Attenuation (dB)	0/4	6/7.5/9	-	-	6/7.5/9
Brightness	-	Yes	-	-	Yes
Midrange Attenuation (dB)	0/4/7	0/3/6	-	-	-
Octave (dB)	12	12	12	12	12
Woofer octave Sel (dB Octave)	-	-	-	-	6/12



MODEL NUMBER	1DF5200H	1DF1800H	1DF750H	1DF180B
TYPE	HIGH PASS	HIGH PASS	HIGH PASS	LOW PASS
Crossover Point	5,200	1,800	900	180
Selectable Crossover Point (hz)	6,800	2,500	-	-
Impedance (Ohms)	8	8	8	4/8
Woofer Impedance (Ohms)	-	-	-	4/8
RMS Power (Watts)	100	150	250	600
Program Power (Watts)	200	300	500	1,200
HF Attenuation (dB)	0/4	6/9	-	-
Brightness	Yes	Yes	-	-
Midrange Attenuation (dB)	-	-	-	-
Octave (dB)	12	12	12	12
Woofer octave Sel (dB Octave)	-	-	-	-

## D4400Ph

Pro audio phenolic compression driver that offers unsurpassed vocal and midrange reproduction



## Compression Driver

# 2-1.4"



	D4400Ph	D4400Ph-Nd	D4400Ti	D4400Ti-Nd	D3240Ti	D3240Ti-16
THROAT DIAMETER	2"	2"	2"	2"	2"	1.4"
TYPE	Bolt-on	Bolt-on	Bolt-on	Bolt-on	Bolt-on	Bolt-on
RATED POWER HANDLING	200 Watts	200 Watts	200 Watts	200 Watts	120 Watts	120 Watts
PROGRAM POWER	400 Watts	400 Watts	400 Watts	400 Watts	240 Watts	240 Watts
SENSITIVITY (1W/1M)	109 dB	109 dB	110 dB	110 dB	109 dB	106 dB
FREQUENCY RANGE AT -10 dB	600 - 7,000 Hz	450 - 7,500 Hz	1,000 - 17,000 Hz	1,300 - 17,000 Hz	1,200 - 15,000 Hz	1,400 - 16,000 Hz
MIN. CROSSOVER POINT AT 12 dB/OCT	700 Hz	650 Hz	1,600 Hz	1,600 Hz	1,200 Hz	1,200 Hz
VOICE COIL DIAMETER	4"	4"	4"	4"	2.84"	2.84"
WEIGHT	21.50 Lbs	8.50 Lbs	21.50 Lbs	8.50 Lbs	15.07 Lbs	15.29 Lbs
NOMINAL IMPEDANCE	8 Ω	8 Ω	8 Ω	8 Ω	8 Ω	16 Ω
MAGNET MATERIAL	Ferrite	Neodymium	Ferrite	Neodymium	Ferrite	Ferrite
DIAPHRAGM TYPE	Phenolic	Phenolic	Titanium	Titanium	Titanium	Titanium
REPLACEMENT DIAPHRAGM	RPD4400Ph	RPD4400Ph	RPD4400Ti	RPD4400Ti	RPD3240Ti	RPD3240Ti-16

## D3220Ti-Nd

The Neodymium magnet assembly reduces the weight to just 4.72 lbs



	D3220Ph	D3220Ti	D3220Ti-Nd	D3220Ti-Nd-16
THROAT DIAMETER	2"	2"	2"	1.4"
TYPE	Bolt-on	Bolt-on	Bolt-on	Bolt-on
RATED POWER HANDLING	110 Watts	110 Watts	110 Watts	110 Watts
PROGRAM POWER	220 Watts	220 Watts	220 Watts	220 Watts
SENSITIVITY (1W/1M)	109 dB	108 dB	110 dB	109 dB
FREQUENCY RANGE AT -10 dB	650 - 7,500 Hz	1,200 - 17,000 Hz	1,600 - 19,000 Hz	1,600 - 17,000 Hz
MIN. CROSSOVER POINT AT 12 dB/OCT	800 Hz	1,600 Hz	1,600 Hz	1,600 Hz
VOICE COIL DIAMETER	3"	3"	3"	3"
WEIGHT	9.72 Lbs	9.69 Lbs	4.72 Lbs	4.81 Lbs
NOMINAL IMPEDANCE	8 Ω	8 Ω	8 Ω	16 Ω
MAGNET MATERIAL	Ferrite	Ferrite	Neodymium	Neodymium
DIAPHRAGM TYPE	Phenolic	Titanium	Titanium	Titanium
REPLACEMENT DIAPHRAGM	RPD3220Ph	RPD3220Ti	RPD3220Ti	RPD3220Ti-16

# Combos

## Combos



NEW



NEW



	WG3220Ph-Nd	WG2500TI	WG3220Ti-Nd-16
THROAT DIAMETER	2"	2"	1.4"
TYPE	Combo	Combo	Line Array Combo
RATED POWER HANDLING	110 Watts	100 Watts	110 Watts
PROGRAM POWER	220 Watts	200 Watts	220 Watts
SENSITIVITY (1W/1M)	109 dB	107 dB	102 dB
FREQUENCY RANGE AT -10 dB	600 - 7,500 Hz	1,200 - 17,000 Hz	1,500 - 19,000 Hz
MIN. CROSSOVER POINT AT 12 dB/OCT	800 Hz	1,700 Hz	1,500 Hz
VOICE COIL DIAMETER	3"	2.5"	3"
WEIGHT	6.40 Lbs	10.32 Lbs	6.96 Lbs
NOMINAL IMPEDANCE	8 Ω	8 Ω	16 Ω
MAGNET MATERIAL	Neodymium	Ferrite	Neodymium
DIAPHRAGM TYPE	Phenolic	Titanium	Titanium
REPLACEMENT DIAPHRAGM	RPD3220Ph	RPD2500Ti	RPD3220Ti-16

# Waveguides 2-1.4"

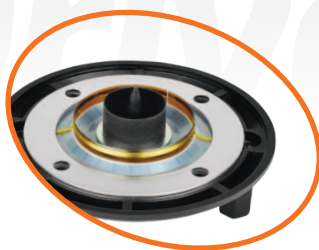
## Waveguide 2-1.4"



	WG500	WG35-35	WG45-50	ADM25-50
THROAT DIAMETER	1.4"	1.4"	2"	Screw-On to Bolt-on Adaptor
DRIVER CONNECTION	Bolt-On	Bolt-On	Bolt-On	
MATERIAL	Aluminum	ABS Plastic	ABS Plastic	Easy to adapt 1" Screw-on Compression driver to a 2" bolt-on waveguide
SOUND DISPERSION HXV	140°	60° x 50°	90° x 40°	
LOW FREQUENCY LIMIT	800 Hz	800 Hz	500 Hz	
WIDTH	5.1" (129 mm)	13.7" (349 mm)	17.75" (450 mm)	
HEIGHT	6.3" (162 mm)	9.3" (238 mm)	10" (254 mm)	
MOUNTING DEPTH	7.1" (181 mm)	8.87" (225.5 mm)	7.5" (190.5 mm)	
WEIGHT	2.10 lbs	1.33 lbs	3.73 lbs	



	WG14-50CR	WGP14-50 CHROME	WGP22-50	WGP26-50
THROAT DIAMETER	2"	2"	2"	2"
DRIVER CONNECTION	Bolt-On	Bolt-On	Bolt-On	Bolt-On
MATERIAL	Aluminum	ABS Plastic	ABS Plastic	ABS Plastic
SOUND DISPERSION HXV	45° x 45°	45° x 45°	60° x 60°	50° x 25°
LOW FREQUENCY LIMIT	600 Hz	600 Hz	800 Hz	800 Hz
WIDTH	6.18" (157 mm)	7" (178 mm)	9" (229 mm)	11.5" (292 mm)
HEIGHT	6.8" (174 mm)	7" (178 mm)	9" (229 mm)	6.375" (162 mm)
MOUNTING DEPTH	4.84" (123 mm)	5.25" (133 mm)	10.75" (263.5 mm)	9.88" (251 mm)
WEIGHT	1.50 lbs	0.50 lbs	1.25 lbs	0.95 lbs
		Also Available in White, Red, Blue, Orange & Gold	Also Available in White, Chrome & Gold	Also Available in White & Chrome



**D260MY-B**

The D260My-B is a 1" Exit Bolt-on professional driver that features an exceptionally advanced phase plug design making this driver extremely efficient, ideal for your high frequency driver upgrade, also a great option for professional audio enclosures and stage monitor application

## Compression Driver 1"



**NEW**

	D290Py-B	D290Py-S	D280Ti-B	D280Ti-S	D260My-B	D230Ti-B	D230Ti-S
THROAT DIAMETER	1"	1"	1"	1"	1"	1"	1"
TYPE	Bolt-on	Screw-on	Bolt-on	Screw-on	Bolt-on	Bolt-on	Screw-on
RATED POWER HANDLING	90 Watts	90 Watts	80 Watts	80 Watts	60 Watts	30 Watts	30 Watts
PROGRAM POWER	180 Watts	180 Watts	160 Watts	160 Watts	120 Watts	60 Watts	60 Watts
SENSITIVITY (1W/1M)	109 dB	109 dB	109 dB	109 dB	111 dB	105 dB	105 dB
FREQUENCY RANGE AT -10 dB	650 - 19 KHz	650 - 19 KHz	1,300 - 20 KHz	1,300 - 20 KHz	800 - 18 KHz	1,800 - 20 KHz	1,800 - 20 KHz
MIN. CROSSOVER POINT AT 12 dB/OCT	1,000 Hz	1,000 Hz	1,800 Hz	1,800 Hz	1,600 Hz	2,000 Hz	2,000 Hz
VOICE COIL DIAMETER	1.75"	1.75"	1.75"	1.75"	1.5"	1.4"	1.4"
WEIGHT	4.67 Lbs	4.96 Lbs	3.16 Lbs	3.31 Lbs	2.79 Lbs	1.90 Lbs	2.05 Lbs
NOMINAL IMPEDANCE	8 Ω	8 Ω	8 Ω	8 Ω	8 Ω	8 Ω	8 Ω
MAGNET MATERIAL	Ferrite	Ferrite	Ferrite	Ferrite	Ferrite	Ferrite	Ferrite
DIAPHRAGM TYPE	Polyimide	Polyimide	Titanium	Titanium	Mylar	Titanium	Titanium
REPLACEMENT DIAPHRAGM	RPD290Py	RPD290Py	RPD280Ti	RPD280Ti	RPD260My	RPD230Ti	RPD230Ti

1" COMPRESSION DRIVERS

**D290Py**

The polyimide diaphragm is designed to offer an unsurpassed natural upper midrange and high frequency response, sonically similar to textile dome tweeters found in home audio Hi-Fi systems



## Compression Driver & Combo



**NEW**

	WGP275Ph	WG275Ph	D250Ph-S	WG280Ti	WG2-230Ti
THROAT DIAMETER	1"	1"	1"	1"	1"
TYPE	Combo	Combo	Screw-on	Line Array	Line Array Combo
RATED POWER HANDLING	100 Watts	100 Watts	75 Watts	80 Watts	30 x 30 Watts
PROGRAM POWER	200 Watts	200 Watts	150 Watts	160 Watts	60 x 60 Watts
SENSITIVITY (1W/1M)	106 dB	106 dB	107 dB	104 dB	107 dB
FREQUENCY RANGE AT -10 dB	500 - 6,500 Hz	600 - 7,000 Hz	400 - 8,000 Hz	1,200 - 20,000 Hz	1,600 - 20,000 Hz
MIN. CROSSOVER POINT AT 12 dB/OCT	500 Hz	500 Hz	500 Hz	1,800 Hz	2,000 Hz
VOICE COIL DIAMETER	2"	2"	2"	1.75"	1.4"
WEIGHT	2.24 Lbs	2.66 Lbs	3.11 Lbs	4.18 Lbs	5.14 Lbs
NOMINAL IMPEDANCE	8 Ω	8 Ω	8 Ω	8 Ω	8 x 8 Ω
MAGNET MATERIAL	Ferrite	Ferrite	Ferrite	Ferrite	Ferrite
DIAPHRAGM TYPE	Phenolic	Phenolic	Phenolic	Titanium	Titanium
REPLACEMENT DIAPHRAGM	RPD275Ph	RPD275Ph	RPD250Ph	RPD280Ti	RPD230Ti

DRIVERS & COMBOS

# Combos

## Compression Driver & Combo



NEW



NEW



	WG290Py	WG230Ti	WG175Ph	DT175Ph-S
THROAT DIAMETER	1"	1"	1"	1"
TYPE	Combo	Combo	Combo	Screw-on
RATED POWER HANDLING	90 Watts	30 Watts	75 Watts	75 Watts
PROGRAM POWER	180 Watts	60 Watts	150 Watts	150 Watts
SENSITIVITY (1W/1M)	109 dB	105 dB	108 dB	108 dB
FREQUENCY RANGE AT -10 dB	650 - 19,000 Hz	1,800 - 20,000 Hz	1,300 - 19,000 Hz	1,300 - 19,000 Hz
MIN. CROSSOVER POINT AT 12 dB/OCT	1,000 Hz	2,000 Hz	3,000 Hz	3,000 Hz
VOICE COIL DIAMETER	1.75"	1.4"	1"	1"
WEIGHT	2.86 Lbs	2.20 Lbs	1.92 Lbs	1.73 Lbs
NOMINAL IMPEDANCE	8 Ω	8 Ω	8 Ω	8 Ω
MAGNET MATERIAL	Ferrite	Ferrite	Ferrite	Ferrite
DIAPHRAGM TYPE	Polyimide	Titanium	Phenolic	Phenolic
REPLACEMENT DIAPHRAGM	RPD290Py	RPD230Ti	RPDT175Ph	RPDT175Ph

## Super Tweeter



NEW



	TW1000Ph	TW700Ti	TW700Ti-CR	TW500My-Nd	TW400Ti-Nd	TW350Ti
THROAT DIAMETER	N/A	N/A	N/A	N/A	N/A	N/A
TYPE	Super Tweeter	Super Tweeter	Super Tweeter	Super Tweeter	Super Tweeter	Super Tweeter
RATED POWER HANDLING	100 Watts	120 Watts	75 Watts	50 Watts	60 Watts	60 Watts
PROGRAM POWER	200 Watts	240 Watts	150 Watts	100 Watts	120 Watts	120 Watts
SENSITIVITY (1W/1M)	106 dB	107 dB	108 dB	106 dB	105 dB	105 dB
FREQUENCY RANGE AT -10 dB	4,000 - 20,000 Hz	3,500 - 20,000 Hz	3,500 - 19,000 Hz	4,500 - 20,000 Hz	3,500 - 20,000 Hz	3,500 - 20,000 Hz
MIN. CROSSOVER POINT AT 12 dB/OCT	5,000 Hz	5,000 Hz	4,000 Hz	4,000 Hz	5,000 Hz	5,000 Hz
VOICE COIL DIAMETER	1.83"	1.5"	1.25"	1"	1"	1"
WEIGHT	2.67 Lbs	3.48 Lbs	1.24 Lbs	1.10 Lbs	1.37 Lbs	1.37 Lbs
NOMINAL IMPEDANCE	8 Ω	8 Ω	8 Ω	8 Ω	8 Ω	8 Ω
MAGNET MATERIAL	Ferrite	Ferrite	Neodymium	Neodymium	Ferrite	Ferrite
DIAPHRAGM TYPE	Phenolic	Titanium	Mylar	Titanium	Titanium	Titanium
REPLACEMENT DIAPHRAGM	RPTW1000Ph	RPTW700Ti	RPTW500My-Nd	RPTW400Ti-Nd	RPTW350Ti	RPTW350Ti

## Waveguide 1"



NEW



	WGP14-25 BLACK-S	WGP14-25 CHROME	WG11-25
THROAT DIAMETER	1"	1"	1"
DRIVER CONNECTION	Screw-On	Screw-On	Screw-On
MATERIAL	ABS Plastic	ABS Plastic	ABS Plastic
SOUND DISPERSION HXV	45° x 45°	45° x 45°	60° x 60°
LOW FREQUENCY LIMIT	600 Hz	600 Hz	1,200 Hz
WIDTH	6.09" (154.7 mm)	6.08" (154.5 mm)	4.5" (115 mm)
HEIGHT	6.09" (154.7 mm)	6.08" (154.5 mm)	4.5" (115 mm)
MOUNTING DEPTH	3.93" (100 mm)	5.62" (143 mm)	2.71" (69 mm)
WEIGHT	0.20 lbs	0.24 lbs	0.18 lbs
	Also Available in White, Red, Blue Gold & Chrome	Also Available in White, Green, Purple, Red, Blue, Orange & Gold	Also Available in White, Chrome & Orange CR

# Specification Guide

LOUDSPEAKERS	Rated Power Handling	Program Power	Sensitivity (1W/1M)	Freq. Range at -10 dB	Rec. Crossover at 12dB/oct	XMAX	Voice Coil Diameter	Nominal Impedance	Magnet Material	Mounting Depth	Replacement Cone Kit	Page #
4MR60-4	30 Watts	60 Watts	90 dB	90 - 15,000 Hz	190 Hz	2.87 mm	0.78"	4 Ω	Ferrite	2.20" (56 mm)	N/A	pg. 8
5MR450-NDY	225 Watts	450 Watts	94 dB	160 - 16,000 Hz	290 Hz	3.45 mm	1.5"	8 Ω	Neodymium	2.60" (66 mm)	RK5MR450-NDY	pg. 8
5MR450-NDY-4	225 Watts	450 Watts	94 dB	160 - 16,000 Hz	290 Hz	3.30 mm	1.5"	4 Ω	Neodymium	2.60" (66 mm)	RK5MR450-NDY-4	pg. 8
6MB200 v2 <b>NEW</b>	100 Watts	200 Watts	93.5 dB	125 - 6,500 Hz	125 Hz	4.80 mm	1.5"	8 Ω	Ferrite	2.60" (66 mm)	N/A	pg. 8
6MB200	100 Watts	200 Watts	93 dB	125 - 4,500 Hz	125 Hz	4.87 mm	1.5"	8 Ω	Ferrite	2.60" (66 mm)	N/A	pg. 8
6MB200-4 v2 <b>NEW</b>	100 Watts	200 Watts	93.5 dB	125 - 6,500 Hz	125 Hz	4.80 mm	1.5"	4 Ω	Ferrite	2.60" (66 mm)	N/A	pg. 8
6MB200-4	100 Watts	200 Watts	93 dB	125 - 4,500 Hz	125 Hz	4.87 mm	1.5"	4 Ω	Ferrite	2.60" (66 mm)	N/A	pg. 8
6MR200A <b>NEW</b>	100 Watts	200 Watts	94 dB	155 - 11,000 Hz	150Hz	2.62 mm	1.5"	8 Ω	Ferrite	2.24" (57 mm)	N/A	pg. 8
6MR250A	125 Watts	250 Watts	94 dB	150 - 9,500 Hz	300 Hz	3.00 mm	1.5"	8 Ω	Ferrite	3.11" (79 mm)	N/A	pg. 8
6MB250-NDY	125 Watts	250 Watts	94 dB	115 - 6,500 Hz	125 Hz	4.25 mm	1.5"	8 Ω	Neodymium	2.50" (65 mm)	N/A	pg. 8
6MB250-NDY-4	125 Watts	250 Watts	94 dB	115 - 6,500 Hz	125 Hz	4.25 mm	1.5"	4 Ω	Neodymium	2.50" (65 mm)	N/A	pg. 8
6MR300SEALv2	150 Watts	300 Watts	96 dB	400 - 7,500 Hz	400 Hz	4.50 mm	1.5"	8 Ω	Ferrite	2.99" (76 mm)	N/A	pg. 8
6MB500FT	250 Watts	500 Watts	94 dB	110 - 6,500 Hz	120 Hz	5.52 mm	2"	8 Ω	Ferrite	3.11" (79 mm)	RK6MB500FT	pg. 8
6MR500-NDY	250 Watts	500 Watts	96 dB	105 - 12,500 Hz	230 Hz	4.22 mm	2"	8 Ω	Neodymium	2.91" (74 mm)	RK6MR500-NDY	pg. 8
6MR500-NDY-4	250 Watts	500 Watts	96 dB	105 - 12,500 Hz	230 Hz	4.22 mm	2"	4 Ω	Neodymium	2.91" (74 mm)	RK6MR500-NDY-4	pg. 8
8MR400A	200 Watts	400 Watts	94 dB	80 - 8,500 Hz	260 Hz	3.00 mm	1.5"	8 Ω	Ferrite	3.52" (89.5 mm)	N/A	pg. 7
8MR400-NDY	200 Watts	400 Watts	94 dB	115 - 8,500 Hz	160 Hz	4.75 mm	1.5"	8 Ω	Neodymium	2.95" (75 mm)	N/A	pg. 7
8MR400-NDY-4	200 Watts	400 Watts	95 dB	115 - 8,500 Hz	160 Hz	4.75 mm	1.5"	8 Ω	Neodymium	2.95" (75 mm)	N/A	pg. 7
8MB450	225 Watts	450 Watts	93 dB	70 - 7,000 Hz	120 Hz	4.87 mm	2"	8 Ω	Ferrite	3.37" (85 mm)	N/A	pg. 7
8MB450-4	225 Watts	450 Watts	93 dB	70 - 6,500 Hz	120 Hz	4.87 mm	2"	4 Ω	Ferrite	3.37" (85 mm)	N/A	pg. 7
8MB500v2-NDY	250 Watts	500 Watts	95 dB	75 - 7,500 Hz	120 Hz	4.75 mm	2"	8 Ω	Neodymium	3.31" (84 mm)	RK8MB500v2-NDY	pg. 7
8MR500-NDY-4	250 Watts	500 Watts	96 dB	95 - 9,000 Hz	160 Hz	3.00 mm	1.5"	4 Ω	Neodymium	3.15" (80 mm)	RK8MR500-NDY-4	pg. 7
8MR600X <b>NEW</b>	300 Watts	600 Watts	98 dB	85 - 8,500 Hz	160 Hz	5.25 mm	2"	8 Ω	Ferrite	3.68" (95.5 mm)	RK8MR600X	pg. 7
8MB600FT	300 Watts	600 Watts	96 dB	105 - 6,500 Hz	100 Hz	5.30 mm	2"	8 Ω	Ferrite	3.42" (82.5 mm)	RK8MB600FT	pg. 7
10FR300PR	150 Watts	300 Watts	100 dB	60 - 14,000 Hz	60.12 Hz	4.00 mm	2"	8 Ω	Ferrite	4.17" (106 mm)	N/A	pg. 6
10MB400	200 Watts	400 Watts	96 dB	65 - 4,000 Hz	95 Hz	5.30 mm	2"	8 Ω	Ferrite	4.25" (108 mm)	RK10MB400	pg. 6
10MB400-4	200 Watts	400 Watts	96 dB	65 - 4,000 Hz	95 Hz	5.00 mm	2"	4 Ω	Ferrite	4.25" (108 mm)	RK10MB400-4	pg. 6
10W450	225 Watts	450 Watts	93 dB	75 - 6,500 Hz	120 Hz	3.87 mm	2"	8 Ω	Ferrite	4.13" (105 mm)	N/A	pg. 6
10W450-4	225 Watts	450 Watts	93 dB	75 - 6,500 Hz	120 Hz	3.87 mm	2"	4 Ω	Ferrite	4.13" (105 mm)	N/A	pg. 6
10W650A	325 Watts	650 Watts	97 dB	75 - 5,500 Hz	150 Hz	4.50 mm	2.5"	8 Ω	Ferrite	4.33" (110 mm)	RK10W650A	pg. 6
10W650A-4	325 Watts	650 Watts	97 dB	75 - 5,500 Hz	150 Hz	4.50 mm	2.5"	4 Ω	Ferrite	4.33" (110 mm)	RK10W650A-4	pg. 6
10W650A-16	325 Watts	650 Watts	96 dB	75 - 5,500 Hz	150 Hz	4.20 mm	2.5"	16 Ω	Ferrite	4.33" (110 mm)	RK10W650A-16	pg. 6
10MB800FT <b>NEW</b>	400 Watts	800 Watts	99 dB	65 - 6,500 Hz	120 Hz	3.50 mm	2.5"	8 Ω	Ferrite	5.51" (140 mm)	RK10MB800FT	pg. 6
10MB1000	500 Watts	1000 Watts	95 dB	65 - 5,500 Hz	80 Hz	4.87 mm	3"	8 Ω	Ferrite	3.97" (101 mm)	RK10MB1000	pg. 6
10MR1000X <b>NEW</b>	500 Watts	1000 Watts	100 dB	75 - 6,000 Hz	150 Hz	2.50 mm	3"	8 Ω	Ferrite	4.27" (108.5mm)	RK10MR1000X	pg. 6
10MR1003-NDY	500 Watts	1000 Watts	99 dB	65 - 6,500 Hz	160 Hz	5.50 mm	3"	8 Ω	Neodymium	4.92" (125 mm)	RK10MR1003-NDY	pg. 6
12W750A	375 Watts	750 Watts	97 dB	60 - 5,500 Hz	200 Hz	3.62 mm	2.5"	8 Ω	Ferrite	5.12" (130 mm)	RK12W750A	pg. 5
12MB1003FT	500 Watts	1000 Watts	98 dB	55 - 5,000 Hz	120 Hz	6.12 mm	3"	8 Ω	Ferrite	5.31" (135 mm)	RK12MB1003FT	pg. 5
12MB1500 <b>NEW</b>	750 Watts	1500 Watts	98.5 dB	75 - 5,000 Hz	110 Hz	6.50 mm	3.5"	8 Ω	Ferrite	5.14" (130.5mm)	RK12MB1500	pg. 5
12W1600 <b>NEW</b>	800 Watts	1600 Watts	94 dB	55 - 2,500 Hz	60 Hz	10.50 mm	4"	8 Ω	Ferrite	5.51" (140 mm)	RK12W1600	pg. 5
12MR2000-NDY	1000 Watts	2000 Watts	98 dB	55 - 5,500 Hz	180 Hz	6.15 mm	4"	8 Ω	Neodymium	5.51" (140 mm)	RK12MR2000-NDY	pg. 5
12MR2000	1000 Watts	2000 Watts	97 dB	60 - 5,000 Hz	180 Hz	6.62 mm	4"	8 Ω	Ferrite	5.47" (139 mm)	RK12MR2000	pg. 5
15W700	350 Watts	700 Watts	95 dB	35 - 3,500 Hz	80 Hz	6.87 mm	3"	8 Ω	Ferrite	5.51" (140 mm)	N/A	pg. 4
15W1000v2	500 Watts	1000 Watts	97 dB	40 - 4,000 Hz	80 Hz	6.37 mm	3"	8 Ω	Ferrite	5.82" (148 mm)	RK15W1000v2	pg. 4
15W1600	800 Watts	1600 Watts	97 dB	55 - 2,500 Hz	75 Hz	7.00 mm	4"	8 Ω	Ferrite	5.51" (140 mm)	RK15W1600	pg. 4
185W2200v2	1100 Watts	2200 Watts	97 dB	45 - 2,500 Hz	50 Hz	9.75 mm	4"	8 Ω	Ferrite	7.56" (192 mm)	RK185W2200v2	pg. 4
185W3600 <b>NEW</b>	1800 Watts	3600 Watts	97 dB	35 - 1,300 Hz	45 Hz	13.25 mm	4.5"	8 Ω	Ferrite	7.64" (194 mm)	RK185W3600	pg. 4
215W3000-NDY-4	1500 Watts	3000 Watts	98 dB	35 - 1,800 Hz	45 Hz	13.25 mm	4.5"	4 Ω	Neodymium	9.21" (234 mm)	RK215W3000-NDY-4	pg. 4
215W4000-NDY-2	2000 Watts	4000 Watts	97 dB	35 - 1,200 Hz	45 Hz	15.00 mm	5.3"	2 Ω	Neodymium	9.64" (245 mm)	RK215W4000-NDY-2	pg. 4

# Specification Guide

CROSSOVERS	Type	Crossover Point	Selectable Crossover Point	Impedance	Woofers Impedance	RMS Power	Program Power	HF Attenuation	Brightness	Midrange Attenuation	Octave	Woofers Octave Sel	Page #
3DF750/5000	Three-way	750/5,000	-	8 Ω	4 Ω / 8 Ω	450 Watts	900 Watts	0/4 dB	-	0/4/7 dB	12 dB	-	pg. 9
3DF400/1800	Three-way	400/1,800	-	8 Ω	4 Ω / 8 Ω	950 Watts	1,900 Watts	6/7.5/9 dB	Yes	0/3/6 dB	12 dB	-	pg. 9
2DF4400	Two-way	4,400	-	8 Ω	4 Ω / 8 Ω	290 Watts	580 Watts	-	-	-	12 dB	-	pg. 9
2DF2K	Two-way	2,000	-	8 Ω	-	450 Watts	900 Watts	-	-	-	12 dB	-	pg. 9
2DF1800	Two-way	1,800	-	8 Ω	4 Ω / 8 Ω	650 Watts	1,300 Watts	6/7.5/9 dB	Yes	-	12 dB	6/12 dB	pg. 9
1DF5200H	High Pass	5,200	6,800	8 Ω	-	100 Watts	200 Watts	0/4 dB	Yes	-	12 dB	-	pg. 9
1DF1800H	High Pass	1,800	2,500	8 Ω	-	150 Watts	300 Watts	6/9 dB	Yes	-	12 dB	-	pg. 9
1DF750H	High Pass	900	-	8 Ω	-	250 Watts	500 Watts	-	-	-	12 dB	-	pg. 9
1DF180B	Low Pass	180	-	4 Ω / 8 Ω	4 Ω / 8 Ω	600 Watts	1,200 Watts	-	-	-	12 dB	-	pg. 9

HF DRIVERS	Throat Diameter	Type	Rated Power Handling	Program Power	Sensitivity (1W/1M)	Frequency Range at -10 dB	Min. Crossover at 12 dB/OCT	Voice Coil Diameter	Weight	Nominal Impedance	Magnet Material	Diaphragm Type	Replacement Diaphragm	Page #
D230Ti-S	1"	Screw-on	30 Watts	60 Watts	105 dB	1,800 - 20,000 Hz	2,000 Hz	1.4"	2.05 Lbs	8 Ω	Ferrite	Titanium	RPD230Ti	pg. 12
D230Ti-B	1"	Bolt-on	30 Watts	60 Watts	105 dB	1,800 - 20,000 Hz	2,000 Hz	1.4"	1.90 Lbs	8 Ω	Ferrite	Titanium	RPD230Ti	pg. 12
D260My-B <small>NEW</small>	1"	Bolt-on	60 Watts	120 Watts	111 dB	800 - 18,000 Hz	1,600 Hz	1.5"	2.79 Lbs	8 Ω	Ferrite	Mylar	RPD260My	pg. 12
D280Ti-S	1"	Screw-on	80 Watts	160 Watts	109 dB	1,300 - 20,000 Hz	1,800 Hz	1.75"	3.31 Lbs	8 Ω	Ferrite	Titanium	RPD280Ti	pg. 12
D280Ti-B	1"	Bolt-on	80 Watts	160 Watts	109 dB	1,300 - 20,000 Hz	1,800 Hz	1.75"	3.16 Lbs	8 Ω	Ferrite	Titanium	RPD280Ti	pg. 12
D290Py-S	1"	Screw-on	90 Watts	180 Watts	109 dB	650 - 19,000 Hz	1,000 Hz	1.75"	4.96 Lbs	8 Ω	Ferrite	Polyimide	RPD290Py	pg. 12
D290Py-B	1"	Bolt-on	90 Watts	180 Watts	109 dB	650 - 19,000 Hz	1,000 Hz	1.75"	4.67 Lbs	8 Ω	Ferrite	Polyimide	RPD290Py	pg. 12
DT175Ph-S	1"	Screw-on	75 Watts	150 Watts	108 dB	1,300 - 19,000 Hz	3,000 Hz	1"	1.73 Lbs	8 Ω	Ferrite	Phenolic	RPDT175Ph	pg. 13
D250Ph-S	1"	Screw-on	75 Watts	150 Watts	107 dB	400 - 8,000 Hz	500 Hz	2"	3.11 Lbs	8 Ω	Ferrite	Phenolic	RPD250Ph	pg. 12
WG175Ph	1"	Combo	75 Watts	150 Watts	108 dB	1,300 - 19,000 Hz	3,000 Hz	1"	1.92 Lbs	8 Ω	Ferrite	Phenolic	RPDT175Ph	pg. 13
WG230Ti <small>NEW</small>	1"	Combo	30 Watts	60 Watts	105 dB	1,800 - 20,000 Hz	2,000 Hz	1.4"	3 Lbs	8 Ω	Ferrite	Titanium	RPD230Ti	pg. 13
WG280Ti <small>NEW</small>	1"	Line Array Combo	80 Watts	160 Watts	104 dB	1,200 - 20,000 Hz	1,800 Hz	1.75"	4 Lbs	8 Ω	Ferrite	Titanium	RPD280Ti	pg. 12
WG290Py <small>NEW</small>	1"	Combo	90 Watts	180 Watts	109 dB	650 - 19,000 Hz	1,000 Hz	1.75"	5 Lbs	8 Ω	Ferrite	Polyimide	RPD290Py	pg. 13
WGP275Ph	1"	Combo	100 Watts	200 Watts	106 dB	500 - 6,500 Hz	500 Hz	2"	2.40 Lbs	8 Ω	Ferrite	Phenolic	RPD275Ph	pg. 12
WG275Ph	1"	Combo	100 Watts	200 Watts	106 dB	600 - 7,000 Hz	500 Hz	2"	2 Lbs	8 Ω	Ferrite	Phenolic	RPD275Ph	pg. 12
WG2-230Ti	1"	Line Array Combo	30x30 Watts	60x60 Watts	107 dB	1,600 - 20,000 Hz	2,000 Hz	1.4"	5.14 Lbs	8x8 Ω	Ferrite	Titanium	RPD230Ti	pg. 12
WG2500Ti <small>NEW</small>	2"	Combo	100 Watts	200 Watts	107 dB	1,200 - 17,000 Hz	1,700 Hz	2.5"	10.32 Lbs	8 Ω	Ferrite	Titanium	RPD2500Ti	pg. 11
WG3220Ti-Nd-16	1.4"	Line Array Combo	110 Watts	220 Watts	102 dB	1,500 - 19,000 Hz	1,500 Hz	3"	6.96 Lbs	16 Ω	Neodymium	Titanium	RPD3220Ti-16	pg. 11
WG3220Ph-Nd <small>NEW</small>	2"	Combo	110 Watts	220 Watts	109 dB	600 - 7,500 Hz	800 Hz	3"	6.40 Lbs	8 Ω	Neodymium	Phenolic	RPD3220Ph	pg. 11
D3220Ti-Nd-16	1.4"	Bolt-on	110 Watts	220 Watts	109 dB	1,600 - 17,000 Hz	1,600 Hz	3"	4.81 Lbs	16 Ω	Neodymium	Titanium	RPD3220Ti-16	pg. 10
D3220Ti-Nd	2"	Bolt-on	110 Watts	220 Watts	110 dB	1,600 - 19,000 Hz	1,600 Hz	3"	4.72 Lbs	8 Ω	Neodymium	Titanium	RPD3220Ti	pg. 10
D3220Ti	2"	Bolt-on	110 Watts	220 Watts	108 dB	1,200 - 17,000 Hz	1,600 Hz	3"	9.69 Lbs	8 Ω	Ferrite	Titanium	RPD3220Ti	pg. 10
D3220Ph	2"	Bolt-on	110 Watts	220 Watts	109 dB	650 - 7,500 Hz	800 Hz	3"	9.72 Lbs	8 Ω	Ferrite	Phenolic	RPD3220Ph	pg. 10
D3240Ti-16	1.4"	Bolt-on	120 Watts	240 Watts	106 dB	1,400 - 16,000 Hz	1,200 Hz	2.84"	15.29 Lbs	16 Ω	Ferrite	Titanium	RPD3240Ti-16	pg. 10
D3240Ti	2"	Bolt-on	120 Watts	240 Watts	109 dB	1,200 - 15,000 Hz	1,200 Hz	2.84"	15.07 Lbs	8 Ω	Ferrite	Titanium	RPD3240Ti	pg. 10
D4400Ti-Nd	2"	Bolt-on	200 Watts	400 Watts	110 dB	1,300 - 17,000 Hz	1,600 Hz	4"	8.50 Lbs	8 Ω	Neodymium	Titanium	RPD4400Ti	pg. 10
D4400Ti	2"	Bolt-on	200 Watts	400 Watts	110 dB	1,000 - 17,000 Hz	1,600 Hz	4"	21.50 Lbs	8 Ω	Ferrite	Titanium	RPD4400Ti	pg. 10
D4400Ph	2"	Bolt-on	200 Watts	400 Watts	109 dB	600 - 7,000 Hz	700 Hz	4"	21.50 Lbs	8 Ω	Ferrite	Phenolic	RPD4400Ph	pg. 10
D4400Ph-Nd	2"	Bolt-on	200 Watts	400 Watts	109 dB	450 - 7,500 Hz	650 Hz	4"	8.50 Lbs	8 Ω	Neodymium	Phenolic	RPD4400Ph	pg. 10

SUPER TWEETERS	Throat Diameter	Type	Rated Power Handling	Program Power	Sensitivity (1W/1M)	Frequency Range at -10 dB	Min. Crossover at 12 dB/OCT	Voice Coil Diameter	Weight	Nominal Impedance	Magnet Material	Diaphragm Type	Replacement Diaphragm	Page #
TW350Ti	N/A	Super Tweeter	60 Watts	120 Watts	105 dB	3,500 - 20,000 Hz	5,000 Hz	1"	1.37 Lbs	8 Ω	Ferrite	Titanium	RPTW350Ti	pg. 12
TW400Ti-Nd <small>NEW</small>	N/A	Super Tweeter	50 Watts	100 Watts	106 dB	4,500 - 20,000 Hz	4,000 Hz	1"	1.10 Lbs	8 Ω	Neodymium	Titanium	RPTW400Ti-Nd	pg. 12
TW500My-Nd	N/A	Super Tweeter	75 Watts	150 Watts	109 dB	3,500 - 19,000 Hz	4,000 Hz	1.25"	1.24 Lbs	8 Ω	Neodymium	Mylar	RPTW500My-Nd	pg. 12
TW700Ti	N/A	Super Tweeter	120 Watts	240 Watts	108 dB	3,500 - 20,000 Hz	5,000 Hz	1.5"	3.48 Lbs	8 Ω	Ferrite	Titanium	RPTW700Ti	pg. 12
TW700Ti-CR	N/A	Super Tweeter	120 Watts	240 Watts	108 dB	3,500 - 20,000 Hz	5,000 Hz	1.5"	3.48 Lbs	8 Ω	Ferrite	Titanium	RPTW700Ti	pg. 12
TW1000Ph	N/A	Super Tweeter	100 Watts	200 Watts	106 dB	4,000 - 20,000 Hz	5,000 Hz	1.83"	2.67 Lbs	8 Ω	Ferrite	Phenolic	RPTW1000Ph	pg. 12

\* Horns: 1", 1.4" and 2" Exit can be found on pages 11 and 13.

www.prvaudio.com

**PRVA**

**YOUR EMOTIONS  
OUR TECHNOLOGY**



PRV AUDIO  
SAO LEOPOLDO, RS - BRAZIL



PRV AUDIO  
FORT LAUDERDALE, FLORIDA - USA



[WWW.FACEBOOK.COM/PRVAUDIOBRAZIL](http://WWW.FACEBOOK.COM/PRVAUDIOBRAZIL)



[WWW.YOUTUBE.COM/PRVAUDIO](http://WWW.YOUTUBE.COM/PRVAUDIO)



[WWW.INSTAGRAM.COM/PRVAUDIO](http://WWW.INSTAGRAM.COM/PRVAUDIO)

PROUD MEMBER OF

**NAMM**

PROUD MEMBER OF

**ALMA**  
INTERNATIONAL

PROUD MEMBER OF

**SEMA**  
SHOW